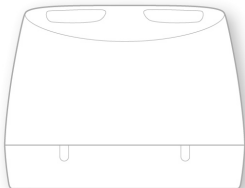




signia



# Charger BTE P/SP & RIC

User Guide

# Content

<b>Before you start</b>	<b>4</b>
Components	6
Connecting the USB power cable	7
<b>Charging</b>	<b>8</b>
Correct position of the hearing instruments	11
Charging status	12
Charging tips	13
<b>Further information</b>	<b>20</b>
Maintenance and care	20
Troubleshooting	21

<b>Important safety information</b>	<b>24</b>
General warnings	24
Personal safety	26
Product safety	31
<b>Important information</b>	<b>33</b>
Explanation of symbols	33
Operating, transport, and storage conditions	35
Technical data of the power supply adapter	37
Disposal information	37
Conformance information	38
Country-specific information	40

## **Before you start**

This device is intended to charge our specific hearing instruments with built-in power cells (lithium-ion rechargeable batteries). Your Hearing Care Professional will advise you on the compatible models.

The charger is only intended for indoor use. Observe and follow the operating conditions in section "Operating, transport, and storage conditions".

The charger is not intended as a means of storage for transportation of hearing instruments.



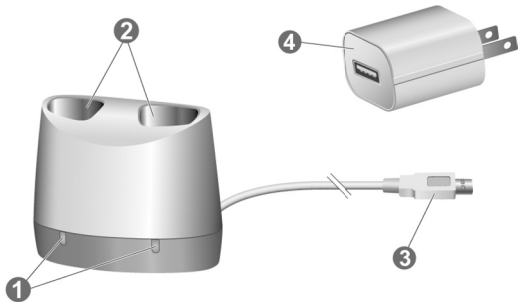
## **CAUTION**

Read this user guide thoroughly and completely and follow the safety information in this document to avoid damage or injury.



The device may not look exactly like the guiding illustrations in these instructions. We reserve the right to make any changes we consider necessary.

## Components



---

❶ Status LEDs

❸ Non-detachable USB power cable

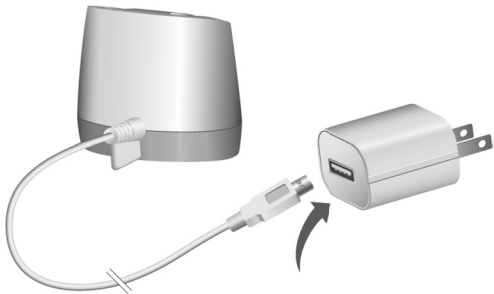
❷ Charging slots

❹ Power adapter

---

## Connecting the USB power cable

- ▶ Connect your USB power cable to the provided power adapter.



# Charging



## NOTICE

Please make sure that the power plug is easily accessible to remove it from power supply if necessary.

- ▶ Connect the charger to the power supply.  
LEDs for each charging slots blink 3 times to indicate that the charger has power and is ready for use.



- ▶ Put the hearing instruments in the charging slots as shown in the picture. You can charge both hearing instruments at the same time.

The hearing instruments are automatically turned off and start charging.

The charging status is indicated, see table "Charging status" on the next pages.



- ▶ When you want to use your hearing instruments, take them out of the charger. They will automatically turn on.
- ▶ You can leave the charger plugged in or remove it from the power supply.

## Correct position of the hearing instruments

- ▶ If not indicated differently, the left and right hearing instruments can be inserted into either charging slot. The slots are not side specific.
- ▶ Make sure the bottom parts of the hearing instruments are placed well into the charging slots.

Correct placement will be indicated by the LED.



## Charging status

LED	Status description
-----	--------------------

---



No LED light:  
Charger is not connected to power supply.  
No hearing instrument is inserted in the  
respective charging slot or the hearing  
instrument is not inserted correctly.

---



Green LED light blinks 3 times:  
Charger is connected to a power supply and  
ready to charge.

---



Flashing green LED light:  
Charging in progress.

---

## **LED    Status description**

---



Solid green LED light:  
Hearing instrument is fully charged.

---



Red LED light blinks 3 times in 2 seconds:  
Error  
Read more in section "Troubleshooting".

---

## **Charging tips**

You may have some questions on how to best charge your hearing instruments. Read the questions and answers below. If you have more questions, your Hearing Care Professional will help you.



## **How often do I need to charge the hearing instruments?**

We recommend charging the hearing instruments daily, even if the power cell is not empty. Charge them overnight so you can be sure to start your day with fully-charged hearing instruments.



## **How long does charging take?**

A full charging cycle takes approximately 3 to 4 hours. After 30 minutes, it is possible to use your hearing instruments for up to 7 hours.

Charging times may vary due to the use of the hearing instruments and the age of the power cell.



### **Can I leave the hearing instruments in the charger?**

Even when fully charged, you can leave the hearing instruments in the charger. They automatically stop charging when they are fully charged.



### **What happens if I forgot to charge?**

Your hearing instruments will automatically switch-off when the power cell is empty. Charge the hearing instruments as soon as possible.

Hearing instruments which have not been charged for over 6 months may be damaged due to an unrecoverable deep-discharge of the power cell. Deep-discharged power cells cannot be charged anymore and have to be replaced.



## **What if I intend not to use the hearing instruments for several days or longer?**

- Short-term storage (up to several days): Turn off your hearing instruments via the push button or place them in the powered charger.

The charger must be connected to the power supply. If the charger is not connected to power supply and you place your hearing instruments in the charger, the hearing instruments are **not** turned off.

Note that when you turn off the hearing instruments via a remote control or smartphone app, the hearing instruments are **not** turned off completely. They are in standby-mode and still draw some power.



- Long-term storage (weeks, months, ...): First, fully charge your hearing instruments. Turn them off via the push button before storing them. We recommend to use drying products while storing the hearing instruments. At 6 month intervals you will have to charge the hearing instruments to avoid an unrecoverable deep-discharge of the power cell. Deep-discharged power cells cannot be charged anymore and they have to be replaced. We recommend recharging more frequently than 6 months intervals.

Observe the storage conditions in hearing instruments' user guide.

Ask your Hearing Care Professional for recommended drying products.



## **What should I pay attention to when charging?**

The hearing instruments and charger must be clean and dry. Observe the operation conditions in section "Operating, transport, and storage conditions". Avoid charging at high ambient temperatures, as this can shorten the life span and capacity of the power cell.

If you use the charger in a very warm environment, note that it will stop charging in order to cool down if the charger's temperature exceeds 45 °C. The LED light will blink 3 times in 2 seconds when this happens. Charging resumes automatically after the device has cooled down. Do not touch the hearing instruments, they may be hot.



## What should I pay attention to when using a power strip with energy-saving features?

- Turn on the power strip **before** you insert the hearing instruments in the charger. Otherwise, the hearing instruments may not be detected by the charger.
- Do not turn off the power strip **while** the hearing instruments are in charger. Otherwise the hearing instruments will automatically turn on and discharge in the charger.

Before you turn off the power strip, remove the hearing instruments from the charger and turn them off via the push button.

# Further information

## Maintenance and care



### NOTICE

Risk of injuries caused by electric shock!

- ▶ If cleaning is required, disconnect the charger from the power supply.
- ▶ Clean the charger with a soft, dry tissue.
- ▶ Never use running water or immerse the charger in water.
- ▶ Do not sterilize or disinfect the charger.

- ▶ After use and before placing in the charger, wipe the charging pins on the hearing aids with a soft, dry tissue to remove grease or moisture.

## Troubleshooting

### Problem and possible solutions

---

LED light is off.

---

- Check if the power supply is connected correctly.
-

---

LED light is blinking red 3 times.

---

An error in the charger has occurred.

- Take the hearing instruments out of the charger and disconnect the charger from the power supply.
  - Reconnect the charger to the power supply and re-insert the hearing instruments in the charging slots.
  - Charger has reached the temperature limit and needs to cool down. Charging is resumed when the temperature decreases below 45 °C.
-

---

If the LEDs are still blinking red:

- Take the hearing instruments out of the charger and disconnect the charger from the power supply.
- Contact your Hearing Care Professional for support.

---

Consult your Hearing Care Professional if you encounter further problems.

# Important safety information

## General warnings

- Observe the operating conditions. Refer to the section "Operating, transport, and storage conditions".
- Pay special attention to protect your device from extreme heat (e.g. fire, microwave oven, induction oven or other high induction fields) and sunlight.
- Charge your hearing instruments only with the approved charger. Ask your Hearing Care Professional for support.
- Do not disassemble the device.
- Do not use the device in explosive atmospheres.
- Do not use devices that are deformed or obviously damaged.



- Do not use the device when its performance after charging decreases considerably. Return the device to your Hearing Care Professional.
- Do not dispose of the device in fire or water.

In any of the above cases, return your device to the Hearing Care Professional.



## **WARNING**

Risk of electric shock!

- ▶ Connect the charger only with a USB power supply which complies with IEC60950-1 and/or IEC62368-1.

## Personal safety



### **WARNING**

Risk of burns!

- ▶ Do not place anything other than your hearing instruments in the charger.



### **WARNING**

Risk of electrical shock!

- ▶ Do not use obviously damaged devices and return them to point of sale.



## **WARNING**

Choking hazard!

Your device contains small parts which can be swallowed.

- ▶ Keep hearing instruments, batteries and accessories out of reach of children and mentally disabled persons.
- ▶ If parts have been swallowed consult a physician or hospital immediately.



## **WARNING**

Note that any unauthorized changes to the product may cause damage to the product or cause injury.

- ▶ Use only approved parts and accessories. Ask your Hearing Care Professional for support.



## **WARNING**

Risk of explosion!

- ▶ Do not use your device in explosive atmospheres (e. g. in mining areas).



## **WARNING**

Charging systems may interfere with measuring devices and electronic equipment.

- ▶ In hospitals: The charger complies with CISPR 35 and CISPR 32. Therefore the use of the charger in hospitals should be permissible. Nevertheless the charger may interfere with highly sensitive devices. In those cases appropriate steps shall be taken (increase distance from sensitive devices or disconnect the charger from power supply).



## **WARNING**

### Interference with implantable devices

- ▶ The device can be used with all electronic implants that comply with the ANSI/AAMI/ISO 14117:2012 Electromagnetic compatibility standard for human implants.
- ▶ In case your implant does not comply with the ANSI/AAMI/ISO 14117:2012 standard, consult the manufacturer of your implantable device for information about the risk of disturbance.

## Product safety



### NOTICE

- ▶ Protect your devices from extreme heat. Do not expose them to direct sunlight.



### NOTICE

- ▶ Protect your devices from high humidity.



### NOTICE

- ▶ Do not dry your devices in the microwave oven.



## **NOTICE**

- ▶ Do not drop. Internal components may get damaged.



## **NOTICE**

- ▶ Do not disassemble the device.



## **NOTICE**

- Use of incompatible parts poses a risk of malfunction.
- ▶ Use only the power supply and country specific adapter that is provided with the charger.



# Important information

## Explanation of symbols

### Symbols used in this document

---



Points out a situation that could lead to serious, moderate, or minor injuries.

---



Indicates possible property damage.

---



Advice and tips on how to handle your device better.

---

## Symbols on the device or packaging

---



CE compliance label, confirms compliance with certain European Directives, refer to section "Conformance information".

---



Indicates the legal manufacturer of the device.

---



Do not dispose of the device with general domestic waste. Read more in section "Disposal information".

---



Read and follow the instructions in the user guide.

---

## Symbols on the device or packaging

---



Medical device

---

## Operating, transport, and storage conditions

### Operating conditions

---

Temperature	10-35°C 50-95°F
Relative humidity	20-75%
Atmospheric pressure	700-1060 hPa

---

During extended periods of transport and storage, please observe the following conditions:

	<b>Storage</b>	<b>Transport</b>
Temperature	10-40°C 50-104°F	-20-60°C -4-140°F
Relative humidity	10-80%	5-90%
Atmospheric pressure	700- 1060 hPa	700- 1060 hPa

For other parts, such as hearing instruments, other conditions may apply.

## Technical data of the power supply adapter

---

Input voltage: 100-240 V AC

---

Input current: 0.5 A

---

Input frequency: 50-60 Hz

---

Output voltage: 5 V DC

---

Output current: 1 A

---

## Disposal information

Recycle devices, accessories and packaging according to local regulations.

To avoid environmental pollution, do not throw the device into household trash. Dispose of devices according to local regulations.

## Conformance information

The CE mark indicates conformity with the following European directives:

- Council Regulation 2017/745 (MDR)
- 2011/65/EU RoHS concerning the restriction of hazardous substances



The CE mark indicates conformity with certain European directives. The full text of the declaration of conformity can be obtained from [www.wsaud.com/signia](http://www.wsaud.com/signia).

This device complies with Part 15B of the FCC Rules and with CAN ICES-003 / NMB-003.

Operation is subject to the following conditions:

- This device may not cause harmful interference,
- this device must accept any interference received, including interference that may cause undesired operation, and
- the user shall keep a minimal distance of 20 cm (8 in) during the charging process.

## **Country-specific information**





---

---

---

---

---

---

---

---



 **Legal Manufacturer**

WSAUD A/S  
Nymøllevej 6  
3540 Lyngø  
Denmark

Document No. 04411-99T02-7600 EN

Order/Item No. 110 007 97

Master Rev03, 03.2021

© 04.2021, WSAUD A/S. All rights reserved



**[www.signia.net](http://www.signia.net)**